

# #145 Colorado Drag Aggregate

## Texture Specification:

Nominal Relief: 1 1/2"

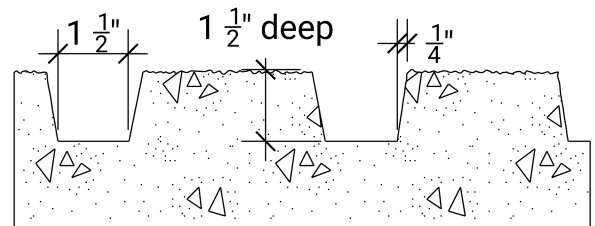
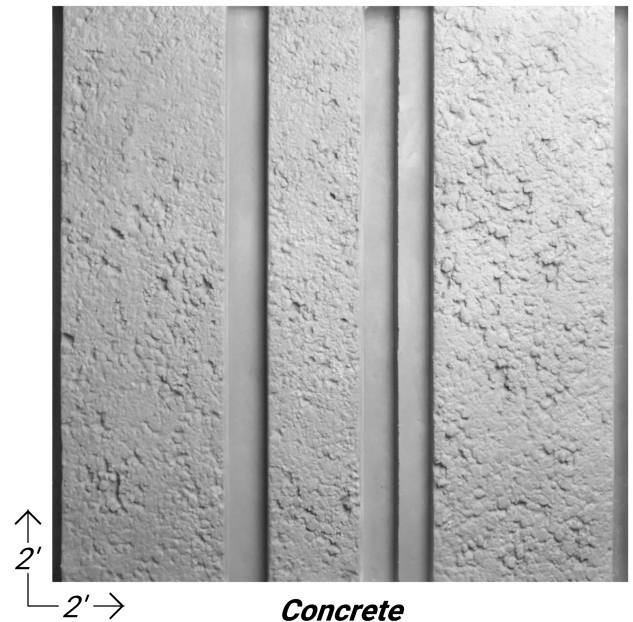
Rib Spacing: 1 1/2"

## Joint:

Side to Side Joints



Hide side to side abutting seams due to horizontal or vertical orientation of the pattern.  
Commonly used on Wood and Fin patterns.



## SHORT FORM SPECIFICATION

### FABRICATION AND INSTALLATION:

- No substitutions will be allowed without prior written approval from the architect or engineer.
- High reuse formliners to be manufactured from urethane rubber.
- Urethane formliners can be bonded to plywood upon request.
- Urethane formliners without plywood should be completely bonded to forming surface using methods recommended by Scott System. Please refer to the application guidelines.
- Urethane formliners can be customized in size, reinforcement, joint orientation, etc. Please contact Scott System for additional information.
- Casting a concrete mockup is recommended to simulate job conditions and review texture in concrete.
- Samples can be provided upon request.

### CARE AND HANDLING:

- Do not expose urethane formliner to temperatures exceeding 140°F (60°C).
- Release agents shall be approved and applied as per Scott System recommendation.
- Keep formliners away from contaminants such as gasoline, acids, solvents, etc.
- Keep formliners out of prolonged direct exposure to sunlight.
- For further instructions please refer to the application guidelines.

**Scott System**  
**109 General Fellows Road**  
**Greenwich, NY 12834**  
**518.383.0500**